



Slow Worms

at



St Peter's Church Wenhaston





Slow worms seen in
Wenhaston
churchyard.

Often seen between
March and October.

Slow worms are legless
lizards. They are not
worms or snakes.

Slow worms like to live in
heathlands, grasslands
and woodlands.

A blank sheet of lined paper with a red header and a red footer. The paper has five punch holes on the left side. A red arrow points from the text 'Write your own slow worm facts.' to the paper.

Write your own
slow worm
facts.



Wildlife Trust Website



Photo: Children from Wenhaston Primary School checking one of the reptile homes in St Peter's churchyard.

 How to make your garden reptile friendly | RSPB Nature on Your Doorstep 

How to make your garden reptile friendly

 **Nature on Your Doorstep**

Watch on  YouTube

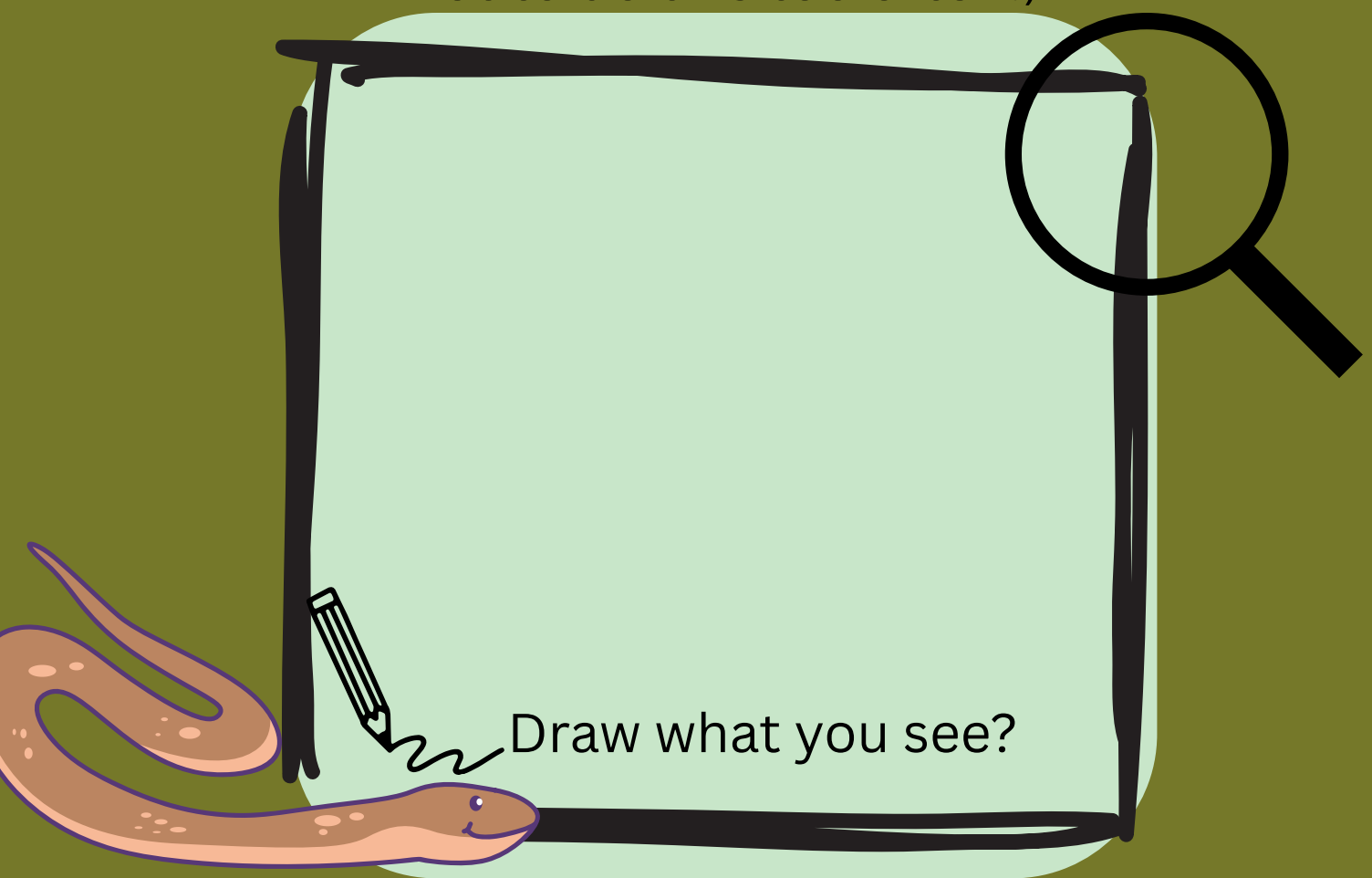


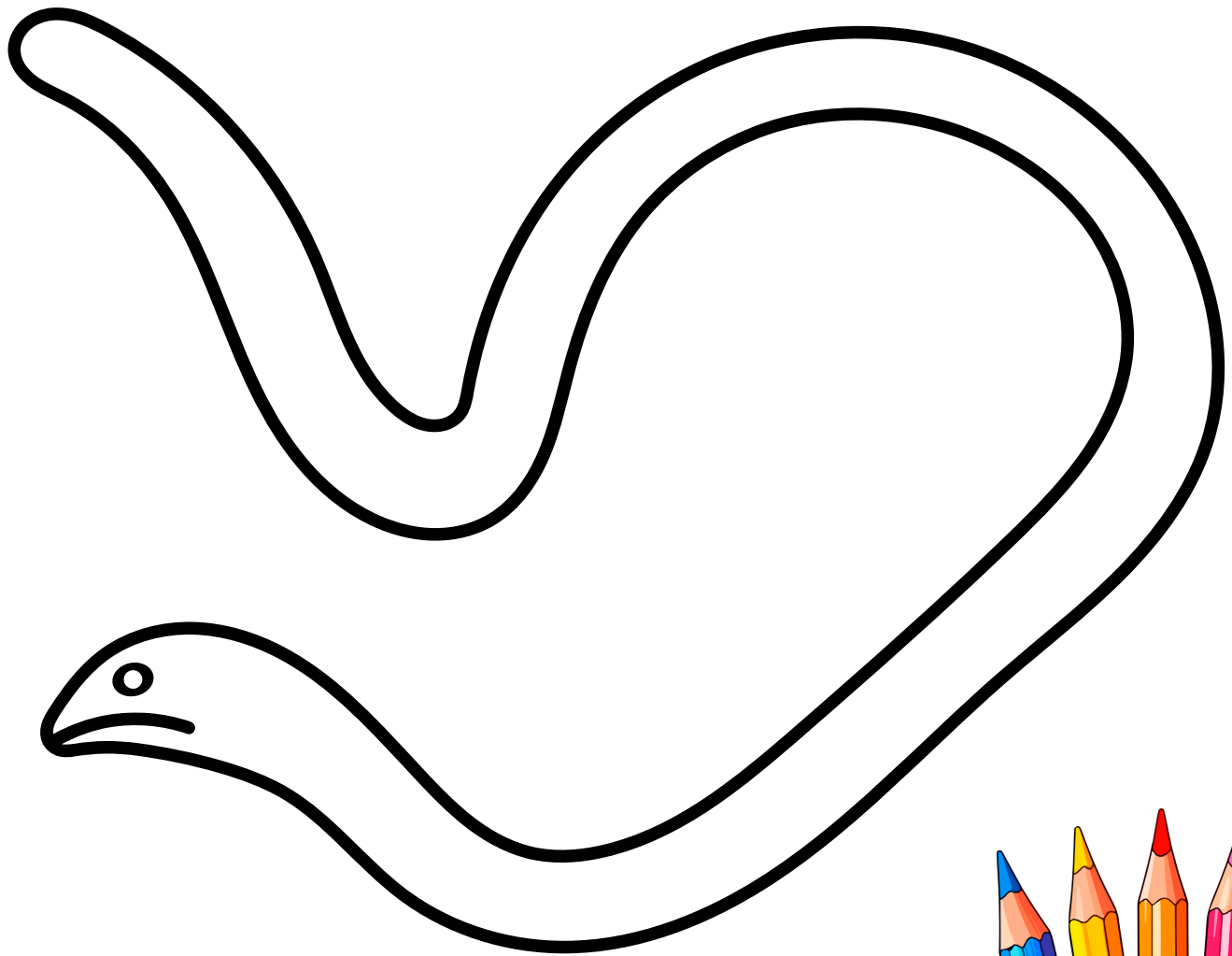
What is a slow worm/reptile home?

A slow worm or reptile home is a piece of corrugated metal or carpet square that is placed in spots within the churchyard that will get the sun.

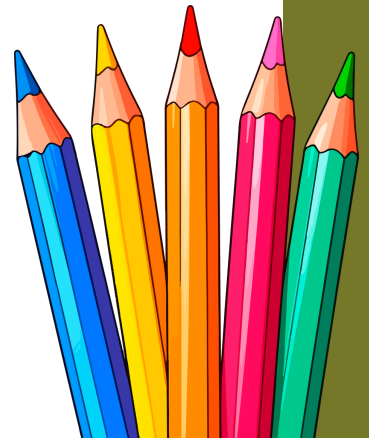
Slow worms are cold blooded animals and are attracted to the warmth and heat they can find underneath the metal or carpet square.

You can carefully lift them up to take a peek underneath and see what you can see. (We try not to do this too often!)





Colour in the slow worm with the special marks you see. Can you tell if it is a male or female?



How to identify Slow Worms

The slow worm is much smaller than a snake and has smooth, golden-grey skin. Males are paler in colour and sometimes have blue spots, while females are larger, with dark sides and a dark stripe down the back.



Booklet produced by Blyth Valley Churches

Find out more about children's activity and work happening across the Blyth Valley Churches on our website:

www.blythvalleychurches.co.uk

Or email Pauline our Children, Family and Youth Worker at:

pauline@growingtogetherearlyyears.co.uk